

IOWA

Carver College
of Medicine

36th ANNUAL

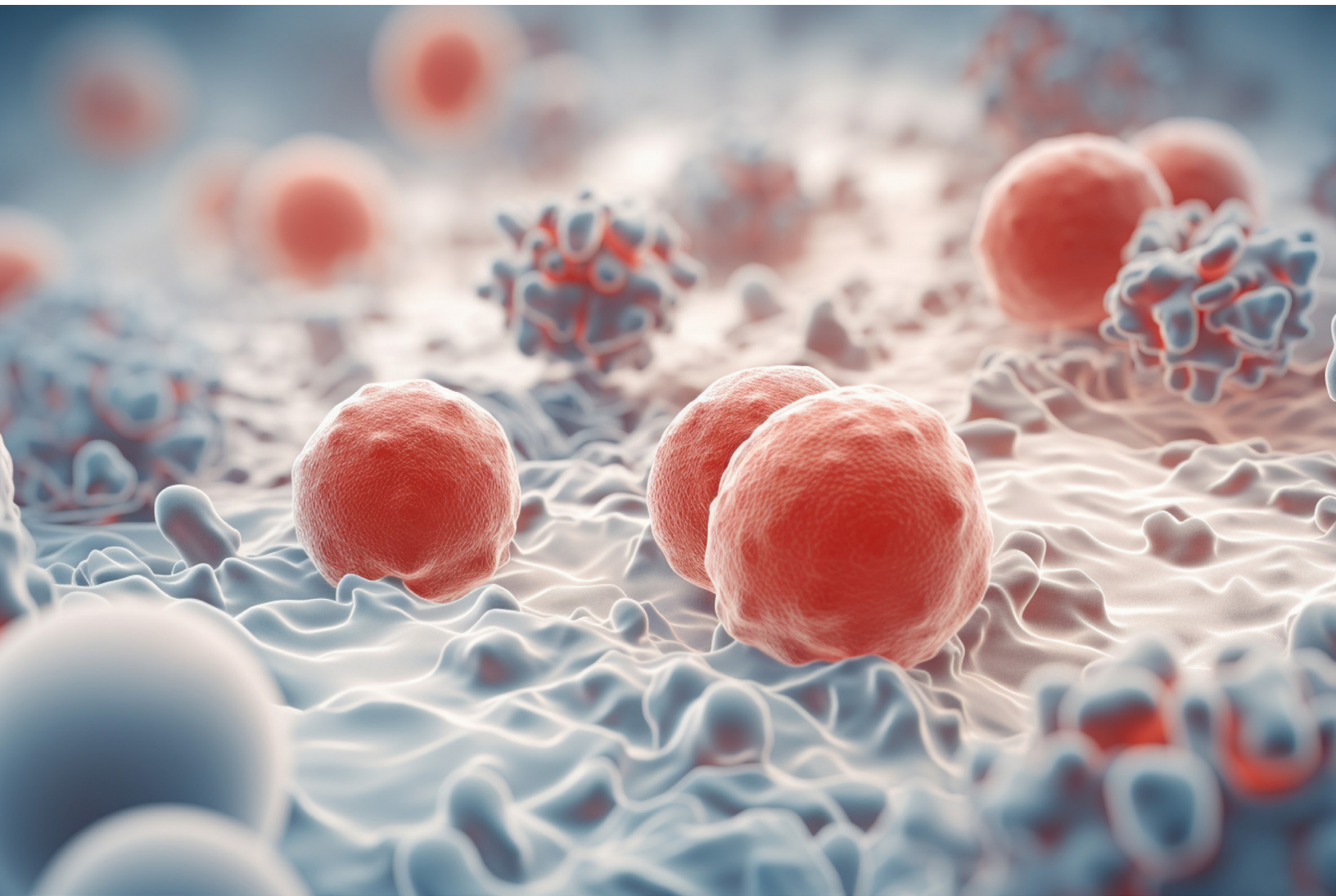
IOWA RHEUMATOLOGY SYMPOSIUM

Systems in Inflammation: From Vasculitis to Scleroderma

Friday, April 24, 2026 | 7 AM - 3:30 PM

Courtyard by Marriott | 901 Melrose Avenue | Iowa City

REGISTER NOW



GENERAL INFORMATION

Friday, April 24, 2026 | 7 AM - 3:30 PM | Courtyard by Marriott | 901 Melrose Avenue | Iowa City

OVERVIEW

This activity offers exploration of current topics in vasculitis, cardio rheumatology, and systemic sclerosis. Sessions cover the diagnosis and management of both large and small vessel vasculitis, alongside emerging insights into how inflammation shapes cardiovascular disease. Afternoon discussions examine systemic sclerosis through a vascular and phenotypic lens, followed by an engaging Mini Thieves Market featuring clinical cases.

CREDITS

AMA PRA Category 1 Credits™ (5.75 hours), ACPE Credit (5.75 hours), ANCC Contact Hours (5.75 hours), Non-Physician Attendance (5.75 hours)

TARGET AUDIENCE

Specialties - Internal Medicine

OBJECTIVES

1. Distinguish between classification criteria for vasculitis and scleroderma.
2. Recommend diagnostic modalities for vasculitis and scleroderma.
3. Compare existing treatments for vasculitis and scleroderma to treatments in current clinical trials.
4. Identify traditional and non-traditional CV risk factors in autoimmune diseases to better stratify patient risk.
5. Demonstrate effective interprofessional communication for enhancing patient care

ACCREDITATION



In support of improving patient care, the University of Iowa Roy J. and Lucille A. Carver College of Medicine is jointly accredited by the Accreditation Council for Continuing Medical Education (ACCME), the Accreditation Council for Pharmacy Education (ACPE), and the American Nurses

Credentialing Center (ANCC), to provide continuing education for the healthcare team.

Physician: The University of Iowa Roy J. and Lucille A. Carver College of Medicine designates this live activity for a maximum of 5.75 AMA PRA Category 1 Credits™. Physicians should claim only the credit commensurate with the extent of their participation in the activity.

Pharmacist: The University of Iowa Roy J. and Lucille A. Carver College of Medicine designates this knowledge-based activity for a maximum of 5.75 ACPE contact hours. Credit will be uploaded to the NABP CPE Monitor within 60 days after the activity completion. Pharmacists must provide their NABP ID and DOB (MMDD) to receive credit. JA0000310-0000-26-041-L01-P

Nurse: The University of Iowa Roy J. and Lucille A. Carver College of Medicine designates this activity for a maximum of 5.75 ANCC contact hours.

Other Health Care Providers: A certificate of participation will be available after successful completion of the course. (It is the responsibility of licensees to determine if this continuing education activity meets the requirements of their professional licensure board.)

DISCLOSURE POLICY:

University of Iowa Roy J. and Lucille A. Carver College of Medicine adheres to the ACCME's Standards for Integrity and Independence in Accredited Continuing Education. Any individuals in a position to control the content of a CE activity, including faculty, planners, reviewers or others are required to disclose all financial relationships with ineligible companies whose primary business is producing, marketing, selling, re-selling, or distributing healthcare products used by or on patients. All relevant financial relationships have been mitigated prior to the commencement of the activity.

AGENDA

36th Annual Rheumatology Symposium - Systems in Inflammation: From Vasculitis to Scleroderma

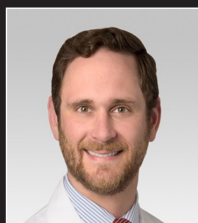
Friday, April 24, 2026

Education General Session Room: Heights Ballroom
Vendor Exhibit Room: Melrose Room

- 7:00 a.m.** **Registration and Breakfast**
- 7:50** **Welcome to the 36th Iowa Symposium**
Dr. Hanna Zembrzuska
- 8:00** **Big Vessel Vasculitis: Management and Mimickers (Robert F. Ashman Lecture)**
Dr. Mike Putman
- 9:00** **Cardio-Rheumatology: The Role of Inflammation in Cardiovascular Disease (Paul Strottman Lecture)**
Dr. Amin Sabet
- 10:00** **Break**
- 10:20** **Small Vessel Vasculitis**
Dr. Mike Putman
- 11:30** **Exhibit Room Open**
Melrose Room
- 12:00 p.m.** **Lunch**
- 1:00** **Reflecting on Systemic Sclerosis as a Vascular and Phenotypic Disease**
Dr. Robyn Domsic
- 2:00** **Mini Thieves Market (Case Presentations)**
Dr. Lemon Ni and Fellows
- 3:30** **Adjournment**

PRESENTERS

VISITING SPEAKERS



Michael Putman, MD, MSCI

Associate Professor of Medicine
Medical College of Wisconsin
Director, Vasculitis Program
Froedtert Hospital
Milwaukee, WI



Amin Sabet, MD, FACC

Assistant Professor of Clinical Medicine
UC Irvine School of Medicine
Director, Advanced Cardiac Imaging
Director, Cardio-Rheumatology Program
Mary and Steven Wen Cardiovascular Division
Irvine, CA



Robyn T. Domsic, MD, MPH

Associate Professor of Medicine
Clinical Director, Scleroderma Center
University of Pittsburgh/UPMC
Pittsburgh, PA

DEPARTMENT OF INTERNAL MEDICINE DIVISION OF IMMUNOLOGY



Hanna Zembrzuska, MD, MME

Clinical Associate Professor of Internal
Medicine—Immunology
Director, Iowa Rheumatology Symposium
University of Iowa Health Care
Iowa City, IA



Amanda Hurtig, MD

Rheumatology Fellow Physician
Department of Internal Medicine
University of Iowa Health Care
Iowa City, IA



Lemon Ni, MD, RhMSUS

Clinical Assistant Professor of Internal
Medicine—Immunology
University of Iowa Health Care
Iowa City, IA



Robert Lukin, MD

Rheumatology Fellow Physician
Department of Internal Medicine
University of Iowa Health Care
Iowa City, IA



Amir Abidov, MD

Allergy/Immunology and Rheumatology
Dual Certification Pathway Fellow Physician
Department of Internal Medicine
University of Iowa Health Care
Iowa City, IA



Madalyn Walsh, MD

Allergy/Immunology and Rheumatology
Dual Certification Pathway Fellow Physician
Department of Internal Medicine
University of Iowa Health Care
Iowa City, IA